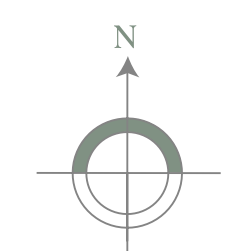
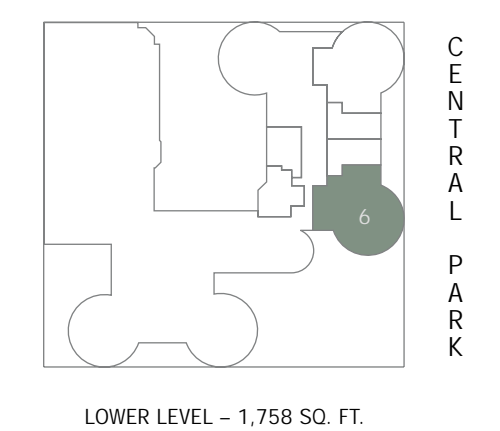
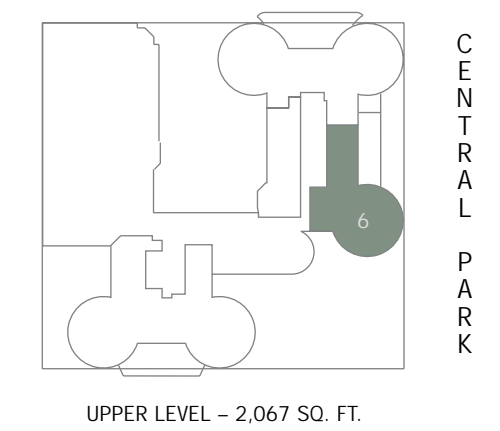
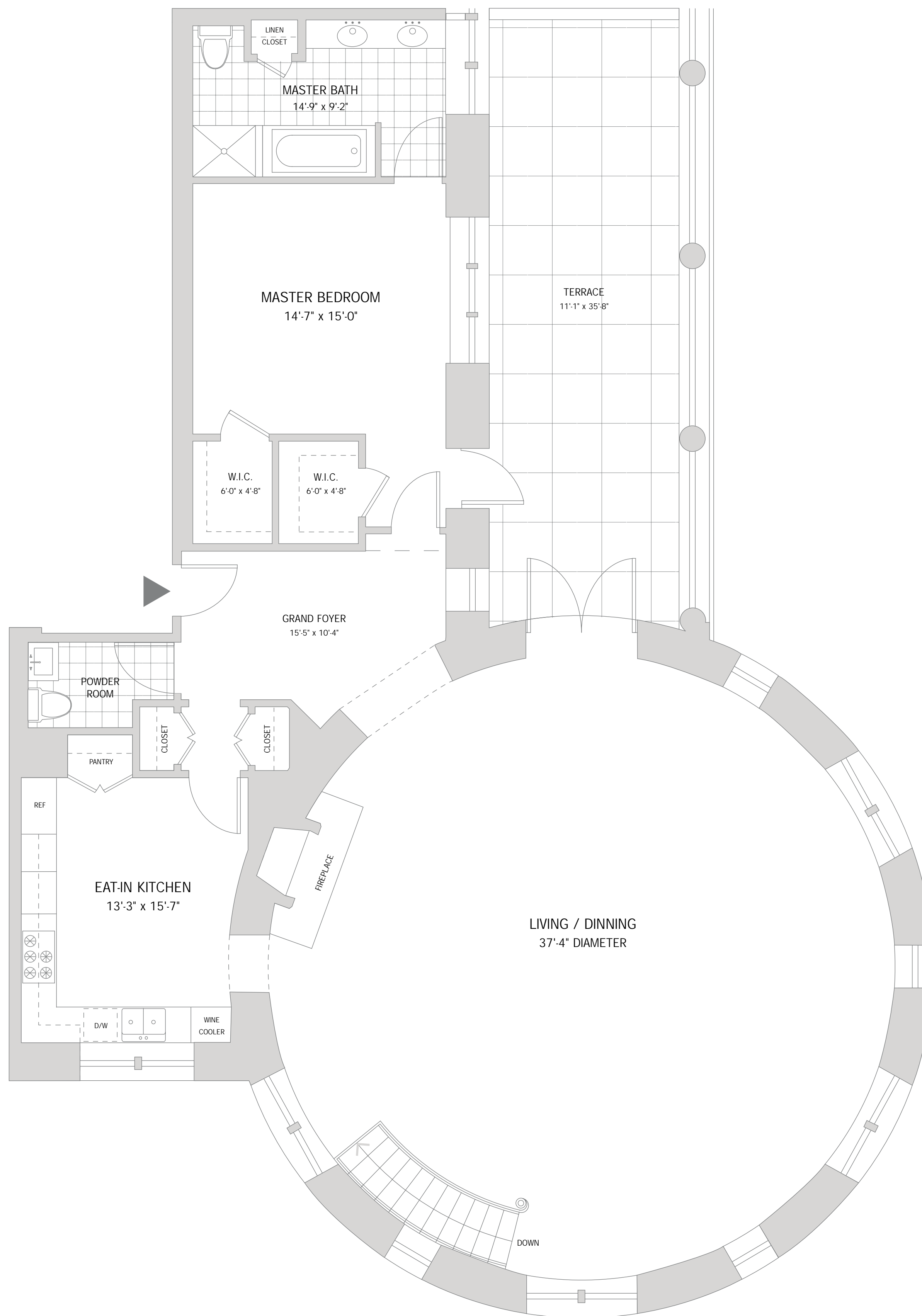


24'

# LANDMARK RESIDENCE 6

- FIRST FLOOR
- DUPLEX – UPPER LEVEL
- 2 BEDROOMS
- 3.5 BATHS
- FAMILY ROOM
- EAT-IN KITCHEN
- TERRACE
- 3,825 SQUARE FEET

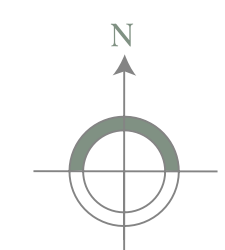
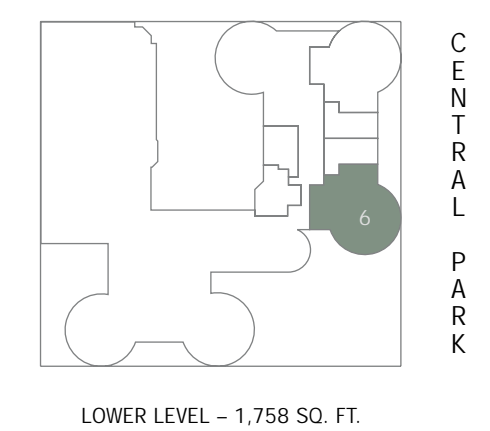
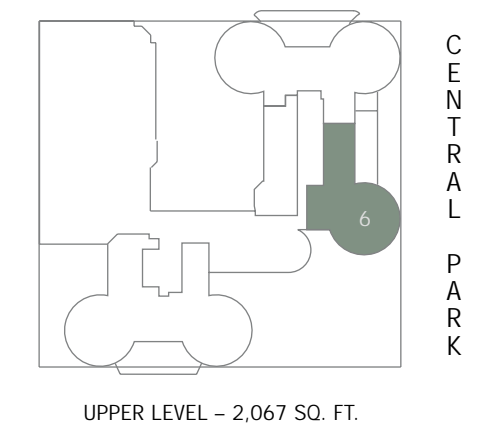
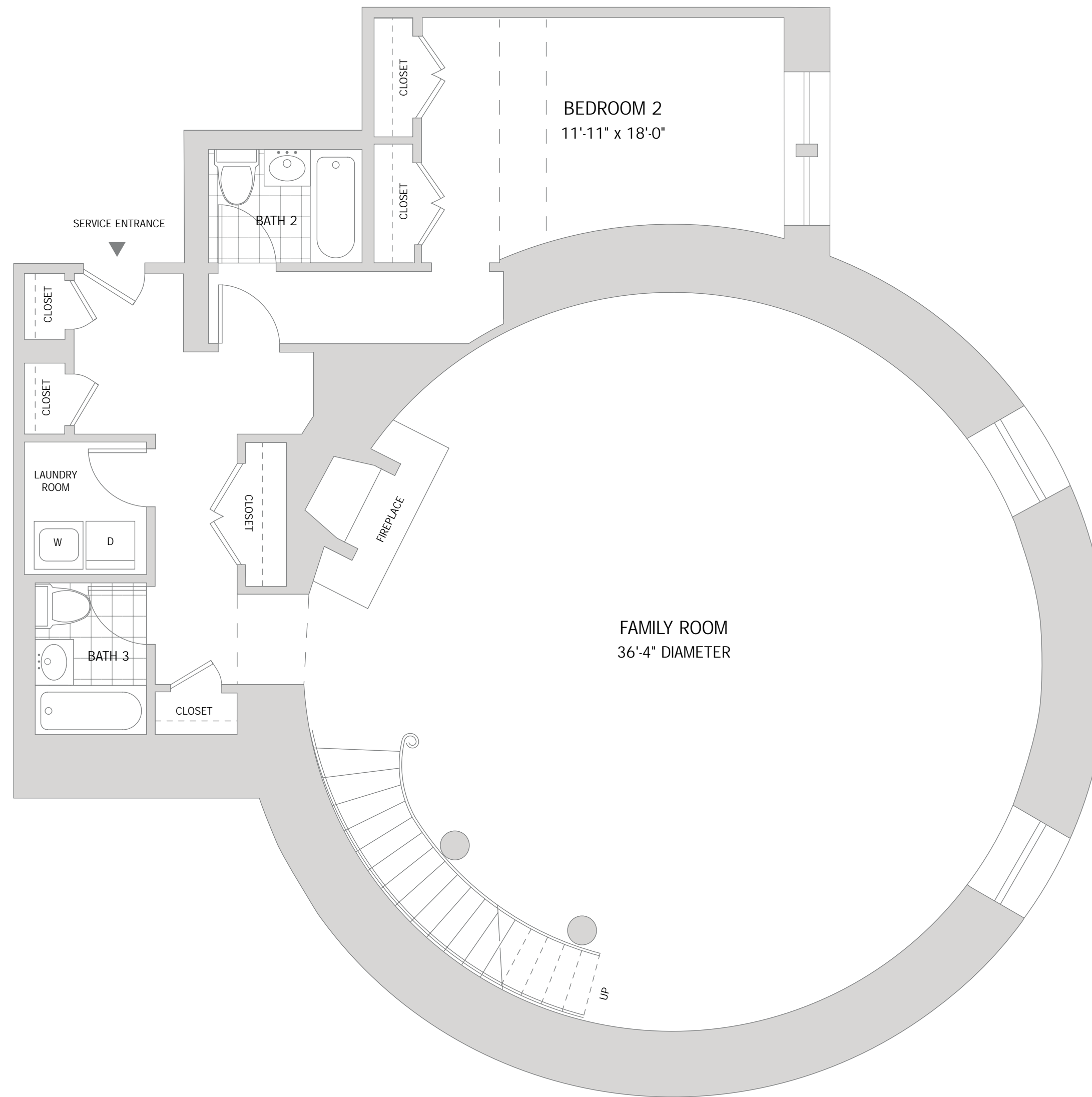


Floor plan is not to scale.

The complete offering terms are in an offering plan available from the sponsor. File No. CD01-0083. MCL Companies' policy of continual improvements in design and construction requires and reserves the right to discontinue floor plans or change any specifications, equipment, dimensions, and prices without notice or obligation. We are pledged to the letter and spirit of U.S. policy for the achievement of equal opportunity throughout the nation. We encourage and support an affirmative advertising and marketing program in which there are no barriers to obtaining housing because of race, color, religion, sex, handicap, familial status, or national origin.

# LANDMARK RESIDENCE 6

FIRST FLOOR  
DUPLEX – LOWER LEVEL  
2 BEDROOMS  
3.5 BATHS  
FAMILY ROOM  
EAT-IN KITCHEN  
TERRACE  
3,825 SQUARE FEET



Floor plan is not to scale.

The complete offering terms are in an offering plan available from the sponsor. File No. CD01-0083. MCL Companies' policy of continual improvements in design and construction requires and reserves the right to discontinue floor plans or change any specifications, equipment, dimensions, and prices without notice or obligation. We are pledged to the letter and spirit of U.S. policy for the achievement of equal opportunity throughout the nation. We encourage and support an affirmative advertising and marketing program in which there are no barriers to obtaining housing because of race, color, religion, sex, handicap, familial status, or national origin.