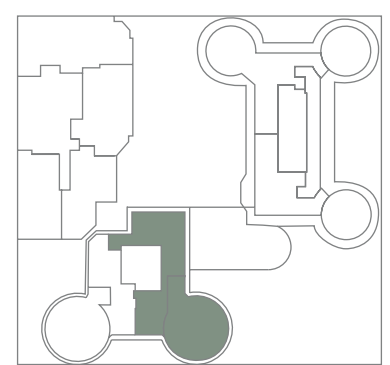
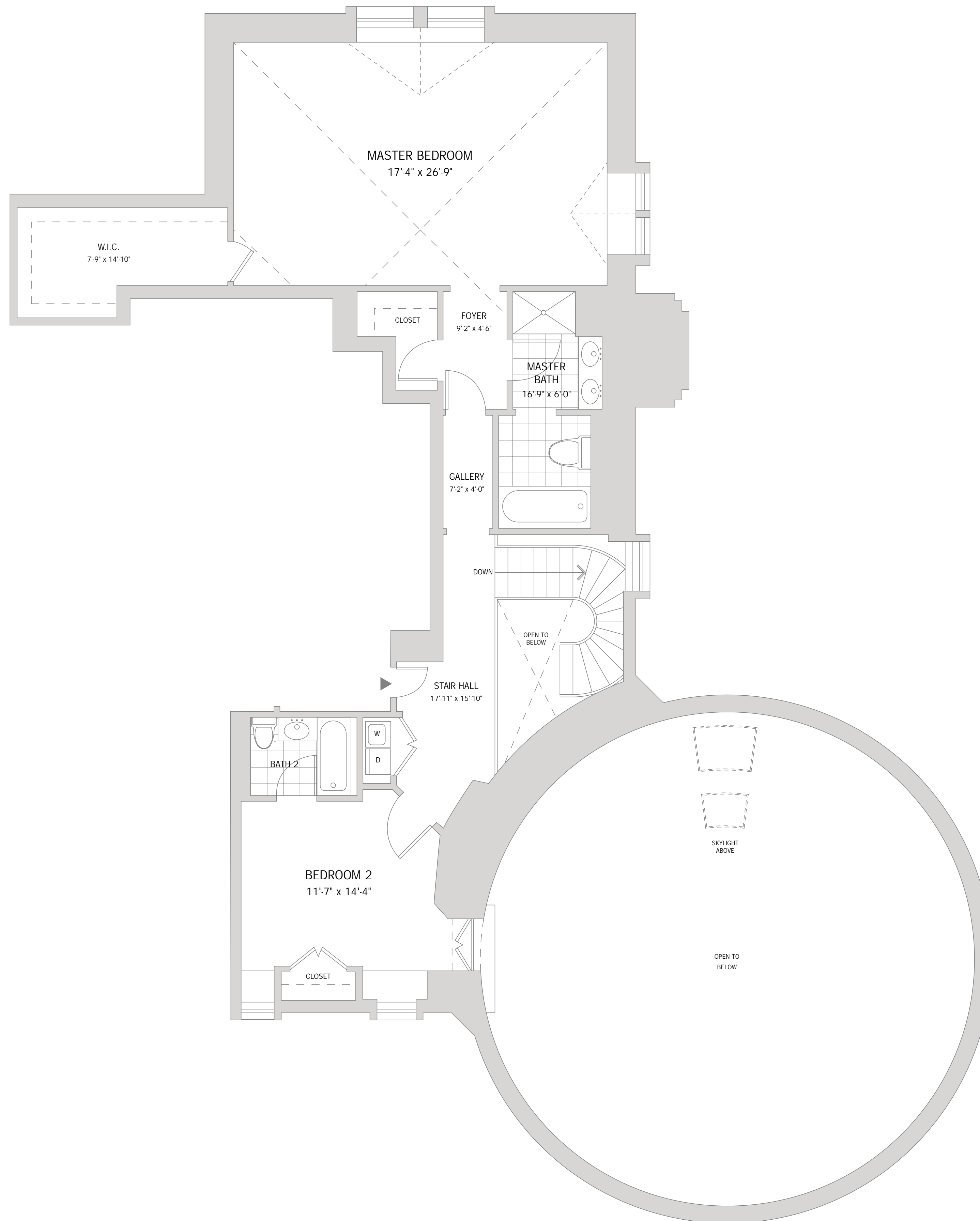


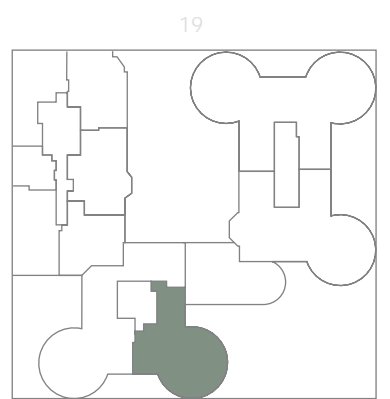
# LANDMARK RESIDENCE 19

DUPLEX – UPPER LEVEL  
FLOORS 4 & 5  
3 BEDROOMS  
3.5 BATHS  
EAT-IN KITCHEN  
3,157 SQUARE FEET



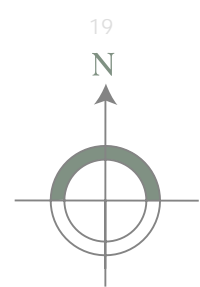
CENTRAL PARK

UPPER LEVEL – 1,218 SQ. FT.



CENTRAL PARK

LOWER LEVEL – 1,939 SQ. FT.

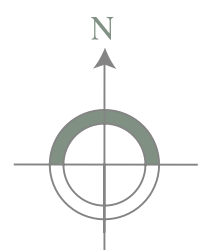
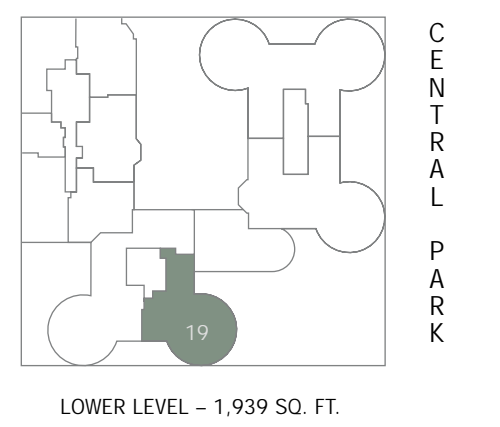
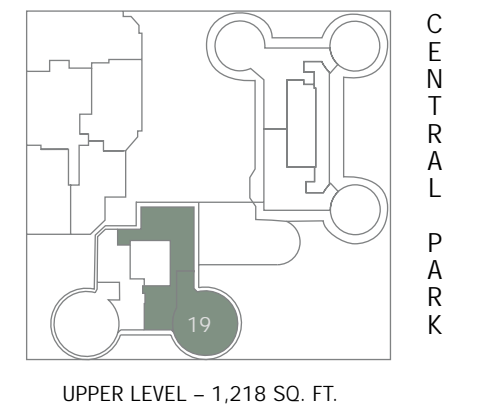
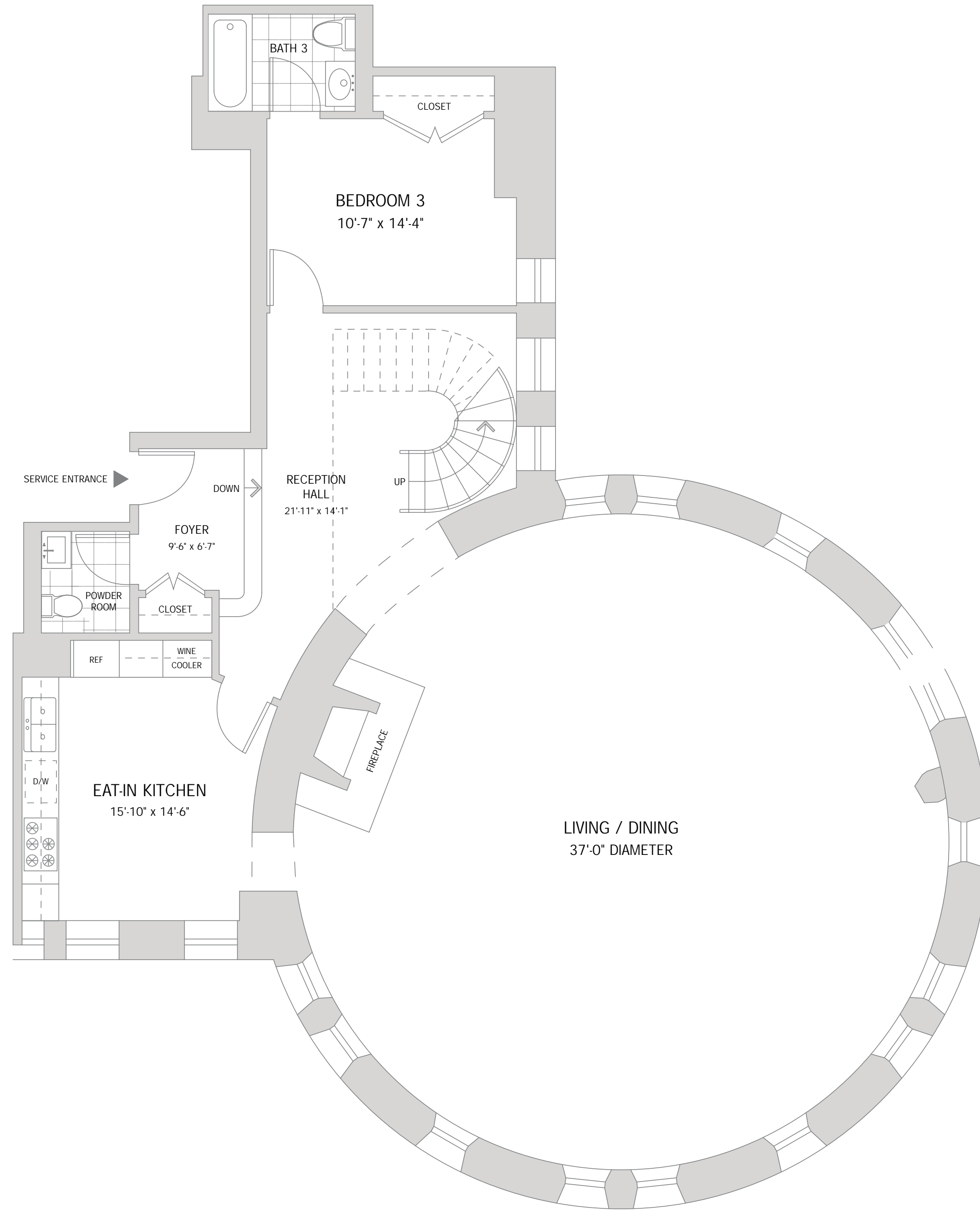


Floor plan is not to scale.

The complete offering terms are in an offering plan available from the sponsor. File No. CD01-0083. MCL Companies' policy of continual improvements in design and construction requires and reserves the right to discontinue floor plans or change any specifications, equipment, dimensions, and prices without notice or obligation. We are pledged to the letter and spirit of U.S. policy for the achievement of equal opportunity throughout the nation. We encourage and support an affirmative advertising and marketing program in which there are no barriers to obtaining housing because of race, color, religion, sex, handicap, familial status, or national origin.

# LANDMARK RESIDENCE 19

DUPLEX - LOWER LEVEL  
 FLOORS 4 & 5  
 3 BEDROOMS  
 3.5 BATHS  
 EAT-IN KITCHEN  
 3,157 SQUARE FEET



Floor plan is not to scale.

The complete offering terms are in an offering plan available from the sponsor. File No. CD01-0083. MCL Companies' policy of continual improvements in design and construction requires and reserves the right to discontinue floor plans or change any specifications, equipment, dimensions, and prices without notice or obligation. We are pledged to the letter and spirit of U.S. policy for the achievement of equal opportunity throughout the nation. We encourage and support an affirmative advertising and marketing program in which there are no barriers to obtaining housing because of race, color, religion, sex, handicap, familial status, or national origin.